



# IBM Maximo Asset Management Scheduler

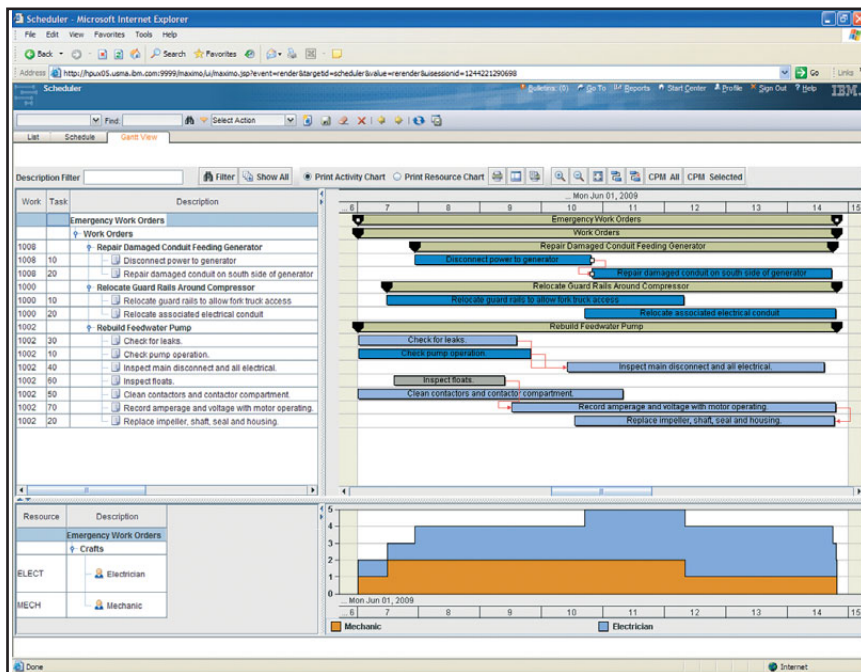
## Highlights

- **View and schedule work orders and tasks in a Gantt chart**
- **Manage dependencies between work orders and tasks**
- **View and manage resource load and availability for optimal resource usage**
- **View and manage work schedules, progress toward completion targets, and dynamically adjust for changes in resource availability**
- **Identify and manage critical activities through critical path method**

IBM® Maximo® Asset Management Scheduler is an easy-to-use and easy-to-configure maintenance planning tool for scheduling maintenance work to ensure efficient work scheduling with optimal resource usage. The demand for maintenance-oriented planning and scheduling has increased as maintenance planners are required to become more accountable for accurate planning of resource usage and maximizing asset availability.

Maximo Asset Management Scheduler provides maintenance planners the ability to view multiple work orders in a Gantt chart with the various crafts that are required to perform the work. This view provides the maintenance planners the ability to compare the resource load with resource availability and to ensure efficient resource usage and timely completion of work orders.

Using Maximo Asset Management Scheduler, maintenance planners can create schedules that contain work order and task combinations that meet virtually any user-defined criteria. These work orders can be viewed in a Gantt chart with their corresponding resource requirement. Planners can drag and drop the tasks and work orders to the desired date and time in the chart, or



IBM Maximo Asset Management Scheduler application showing work orders and tasks in various statuses



use the advanced Critical Path Method calculation at the push of a button. As the tasks and work orders are maneuvered, the resource load is calculated in real time and displayed graphically in the Gantt chart. Planners can also attach a calendar to these schedules to identify work hours and non-work hours to aid in further managing costly overtime labor.

Maximo Asset Management Scheduler also enables planners to manage task and work order dependencies and any lead and lag times that might exist in those dependencies. Planners can use the embedded auto scheduling tool to schedule these tasks and work orders based on their duration and dependencies with other tasks and work orders. The two-stage commit process enables the planners to create “what if” scenarios before committing the schedule results to the work orders and tasks.

### Key features

IBM Maximo Asset Management Scheduler includes the following key features:

- *View and manage work orders and tasks in a Gantt chart*
- *View, create, and manage task and work order dependencies such as Finish to Start, Start to Start, Start to Finish, and Finish to Finish*
- *Manage Lead and Lag while defining task and work order dependencies*
- *View real-time resource load while scheduling work orders and tasks*

- *Compare resource load to resource availability*
- *Identify critical tasks that affect the overall completion of a work order*
- *Identify work orders and tasks requiring a selected craft*
- *Dynamically filter work orders and tasks*
- *Use calendar/shifts to schedule work during working hours and minimize work during non-working hours*
- *Create “what if” scenarios to identify and ensure optimal resource usage*
- *Easily identify work orders that are scheduled outside the schedule window*

### Benefits

IBM Maximo Asset Management Scheduler enables planners to view all open work orders on assets in a Gantt chart so that they can be grouped logically and scheduled together to reduce asset downtime. The ability to view resource load against availability helps the planners to resolve resource over allocation and underutilization. One dynamic view of emergency, planned, and unplanned work competing for available resources enables efficient work planning and prevents costly interruptions and production delays.

### For more information

To learn more about IBM Maximo Asset Management Scheduler, please contact your IBM representative or IBM Business Partner, or visit [ibm.com/tivoli](http://ibm.com/tivoli)

© Copyright IBM Corporation 2009

IBM Corporation  
Software Group  
Route 100  
Somers, NY 10589  
U.S.A.

Produced in the United States of America  
June 2009  
All Rights Reserved

IBM, the IBM logo, [ibm.com](http://ibm.com) and Maximo are trademarks or registered trademarks of International Business Machines Corporation in the United States, other countries, or both. If these and other IBM trademarked terms are marked on their first occurrence in this information with a trademark symbol (® or ™), these symbols indicate U.S. registered or common law trademarks owned by IBM at the time this information was published. Such trademarks may also be registered or common law trademarks in other countries. A current list of IBM trademarks is available on the Web at “Copyright and trademark information” at [ibm.com/legal/copytrade.shtml](http://ibm.com/legal/copytrade.shtml)

Other company, product and service names may be trademarks or service marks of others.

References in this publication to IBM products and services do not imply that IBM intends to make them available in all countries in which IBM operates.

Product data has been reviewed for accuracy as of the date of initial publication. Product data is subject to change without notice. Any statements regarding IBM’s future direction and intent are subject to change or withdrawal without notice, and represent goals and objectives only.

THE INFORMATION PROVIDED IN THIS DOCUMENT IS DISTRIBUTED “AS IS” WITHOUT ANY WARRANTY, EITHER EXPRESS OR IMPLIED. IBM EXPRESSLY DISCLAIMS ANY WARRANTIES OF MERCHANTABILITY, FITNESS FOR A PARTICULAR PURPOSE OR NON-INFRINGEMENT. IBM products are warranted according to the terms and conditions of the agreements (e.g. IBM Customer Agreement, Statement of Limited Warranty, International Program License Agreement, etc.) under which they are provided.



Recyclable, please recycle.

TID14047-USEN-00